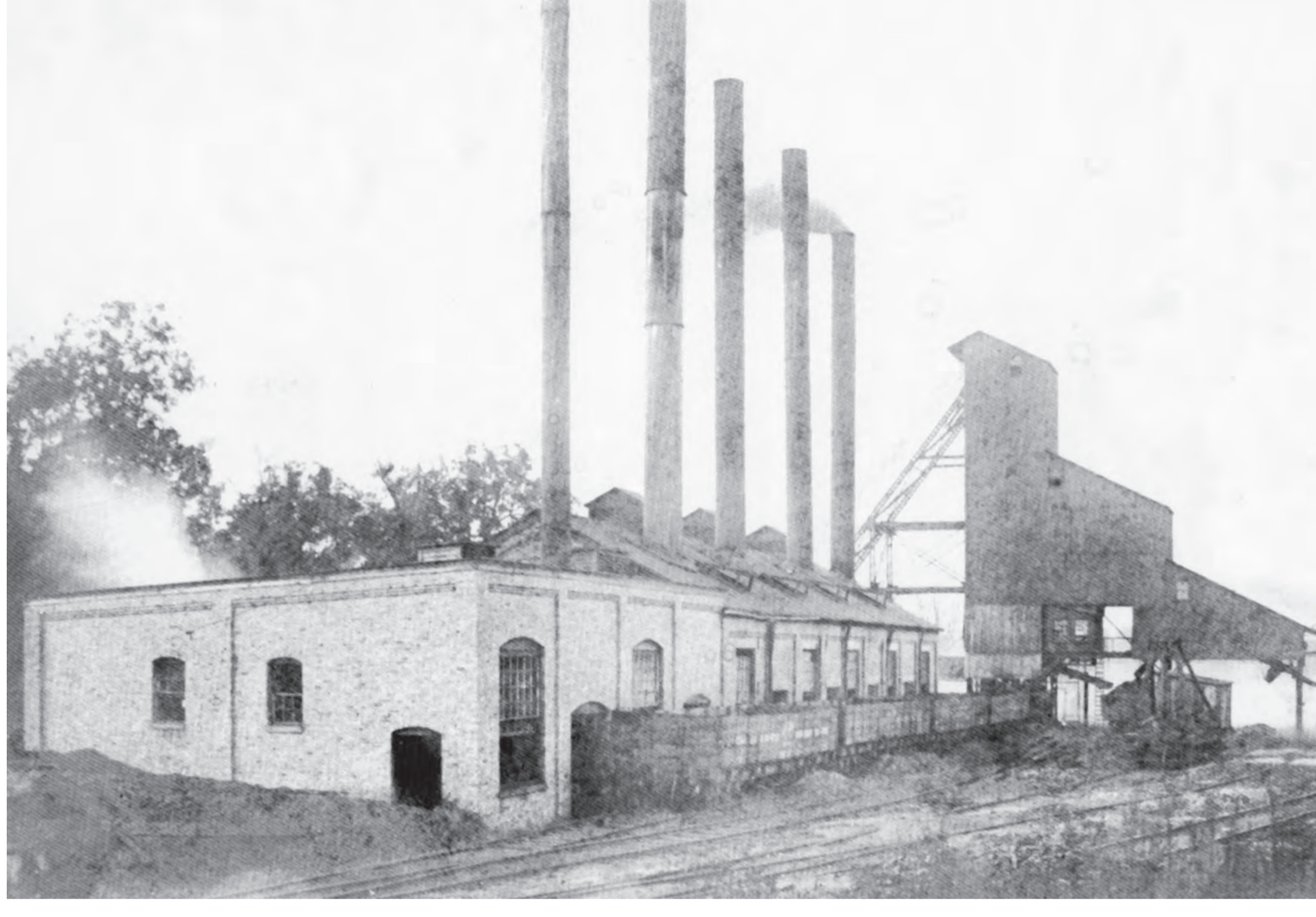


Madison Coal Corporation Coal Mine #1 & Clover Leaf Station

Coal Mine #1 opened in 1892. It was located just off Meridian Road one third of a mile north of the Covered Bridge. In November 1893, a major fire erupted that destroyed all top buildings and machinery. The loss was estimated at \$30,000 and the Madison Coal Corporation had no insurance. The sixteen men working in the mine were hoisted through the air shaft and escaped without injury. The mine resumed operations by January 1894, however, it was short lived. Mine #1 was abandoned in 1897 due to severe water seepage.



Engine Room, Coal Mine #1, circa 1892

Clover Leaf Station was located east of Meridian Road between the tracks just north of Miner Park. John F. Dickman was the agent/telegraph operator for both Peters and Glen Carbon until 1904 when the stations were separated and he was put in charge of the work at Peters. Both the Illinois Central and the Clover Leaf railroads provided passenger service to St. Louis several times a day. During the 1904 World's Fair in St. Louis, railroad service passed through Glen Carbon beginning at 6 a.m. and consisted of 22 passenger trains per day. In addition, another dozen or more of the lucrative freight train traffic came through each weekday.



Clover Leaf Station, John F. Dickman, railroad agent, circa 1900



Villagers could spend the day in St. Louis shopping or attending the World's Fair and still catch the 10:10 train home.

Sisters Mary Watsek Kalal, left, & Katherine Watsek Mateyka (mother of Leona Mateyka Hamilos) St. Louis World's Fair, 1904

The Litchfield and Madison Railroad (L & M) constructed tracks, circa 1900, parallel to the Clover Leaf. In 1922, the Clover Leaf became the Nickel Plate Railroad.



Hilbert W. Dickman, John's son, was rate clerk for Nickel Plate Railroad

This information also can be found on a historical sign along the Nickle Plate Trail. Look for it the next time you're on the trail behind the Glen Carbon Heritage Library.

To learn more about the trails or to plan your route, visit the online map at: mctrails.org/heritage_trail.aspx



Become a Volunteer!

Share your passion for local history . . .

Do you have a passion for learning local history and sharing that knowledge? Volunteer at our museum to engage with the history of the Village of Glen Carbon. Work with the collections—over 4,000 objects.

Apply Now

For more information contact:
sdoolin@glen-carbon.il.us or (618) 288-7271



Show your Village pride by purchasing a Glen Carbon shirt!

Glen Carbon t-shirts and history books make great gifts! Both are for sale at the museum, \$10 each.



Museum Hours:
Tuesdays, Thursdays, and Saturdays 9AM-3PM.
618-288-7271